



Brugge, Belgium Historical Trail



Field Guide



Brugge, Belgium
Historical Trail



How to Use This Guide

A Scouting America historical field guide for Brugge, Belgium helps scouts learn about the city's rich history and scouting traditions. Start by exploring key landmarks like the Belfry, Market Square, and canals, using maps and photos to understand their importance. Remember, this may be the only time your Scouts visit Brugge on their life so make it a great time!

To update a Scouting America Historical Trail, review maps, landmarks, and historical data for accuracy. Ensure safety **guidelines are current. Submit revisions to Scouting America's** historical trails committee for official approval and publication.

This guide can be printed as 5½x4¼ inch pamphlet or read on a tablet or smartphone.





TABLE OF CONTENTS

Getting Prepared	4
History of Brugge	6
Brugge Historical Trail	8
Museums	19
Maps 1-9	22
Pictures	25
Speaking Flemish	29
Quiz	30
Cub Scout Adventures / Scout Merit Badge ...	31
Answers	32
Notes	33





GETTING PREPARED

Just like with any hike (or any activity in Scouting), the Historic Trail program starts with Being Prepared.

1. Review this Field Guide in detail.
2. Check local conditions and weather.
3. Study and Practice with the map and compass.
4. Pack rain gear and other weather-appropriate gear.
5. Take plenty of water.
6. Make sure socks and hiking shoes or boots fit correctly and are broken in. Take care of your feet!
7. Pack a first aid kit, "just in case."
8. Discuss the day's activities, so there are no surprises; discuss safe hiking.
9. Notify or tell someone your anticipated departure and return time
10. Ensure Two-Deep Leadership at all times.
11. Check the Quick Quiz and keep it with you on the trail.





GETTING PREPARED

Brugge Historical Trail

Where and How to Start

The Brugge Historical Trail starts at the Brugge Train Station and proceeds to 31 sites along the trail. There is a parking lot next to the train station for those who are traveling by automobile. Pay by credit card or bank card. Fees may vary. Otherwise use the train to enjoy the beauty of the Belgian countryside.

Distances

- The Cub Scout trail measures 3.5 miles (5.75 km)
- The Scout trail measure 5 miles (8.1 km)

Younger and less-experienced hikers, and those who wish to take more time, will take perhaps a half-day or more to complete the trail. The goal is to enjoy Brugge and all of its historical landscapes.

Many buildings in Brugge have religious statues in niches on street corners or above the entrance to a building. The majority of these statues are of the Madonna with Child. Count how many you observe along the trail.

Fees

Also note that some sites require an Entry Fee and are marked with an asterisk (*) by the name of the location.





HISTORY OF BRUGGE

Brugge, Belgium, often called the "Venice of the North," has a history that dates back over a thousand years. Its origins trace to the 9th century when Vikings established a settlement along the Zwin estuary, a waterway connecting it to the **North Sea. By the 12th century, Brugge had developed into one of Europe's most significant trading hubs, with merchants from England, France, and the Hanseatic League conducting business in its bustling markets. The city's prosperity was built on the wool and cloth trade, making it a financial powerhouse.**

Brugge reached its golden age during the 14th and 15th centuries under the rule of the Dukes of Burgundy. It became a center of wealth, art, and culture, rivaling the great cities of Italy. Banking institutions flourished, and Brugge played a key role in **the development of early capitalism. The city's grandeur was reflected in its** stunning architecture, from the Belfry and the Gothic Town Hall to the churches and grand merchant houses that still define its skyline today. This was also the era of the Flemish Primitives, with artists like Jan van Eyck and Hans Memling producing masterpieces that contributed to the Northern Renaissance.

However, Brugge's fortune declined in the 16th century. The Zwin estuary gradually silted up, cutting the city off from maritime trade. As a result, Antwerp rose as the region's dominant commercial hub, and Brugge fell into economic stagnation. The once-thriving city saw its wealth dwindle, and by the 18th century, it had become a quiet provincial town, largely bypassed by industrialization.

Paradoxically, this decline helped preserve Brugge's medieval charm. By the 19th century, Romantic-era writers and artists rediscovered the city, portraying it as a forgotten gem of the past. This newfound appreciation led to restoration efforts, and Brugge emerged as a major tourist destination in the 20th century. In 2000, UNESCO designated its historic center a World Heritage site, recognizing its well-preserved medieval architecture and cultural significance.

Today, Brugge stands as a living testament to its storied past. Its cobbled streets, scenic canals, and Gothic buildings continue to captivate visitors, offering a **glimpse into an era when it was one of Europe's most powerful and beautiful cities. Despite centuries of change, Brugge's legacy endures, a city frozen in time yet** alive with history.





HISTORY OF BRUGGE

1. Brugge is often referred to as the "Venice of the North" due to its extensive network of canals and medieval architecture.
2. The historic center of Brugge is a UNESCO World Heritage Site, recognized for its well-preserved medieval buildings and cobblestone streets.
3. **The city's name, Brugge, is derived from the Old Dutch word "brugga," meaning bridge,** reflecting its many waterways and bridges.
4. The Belfry of Brugge, a medieval bell tower, stands 83 meters tall and offers stunning views of the city from its top.
5. Brugge was a major center for the cloth industry during the Middle Ages, which contributed significantly to its wealth and development.
6. The Basilica of the Holy Blood, located in the Burg Square, is famous for housing a relic believed to contain a cloth with the blood of Jesus Christ.
7. Brugge has a rich chocolate-making tradition, and it is home to numerous artisanal chocolatiers and the Choco-Story museum, which details the history of chocolate.
8. The city has a unique beer culture, with many traditional breweries, including the Halve Maan Brewery, which has been brewing beer for over 500 years.
9. The Beguinage of Brugge, founded in 1245, is a serene complex of whitewashed houses once home to beguines, religious women who lived in a community without taking formal vows.
10. Brugge has more than 80 bridges, with some of the oldest dating back to the 13th century.
11. The Groeningemuseum in Brugge houses a remarkable collection of Flemish and Belgian paintings, including works by Jan van Eyck and Hans Memling.
12. Brugge was one of the first cities in Europe to have street lighting, introduced in the early 16th century.
13. The city is famous for its lace-making tradition, with the Lace Center (Kantcentrum) offering insights into this intricate craft.
14. The Minnewater, or "Lake of Love," is a picturesque lake surrounded by a park, and it is a popular spot for romantic strolls and boat rides.
15. The Markt, Brugge' main square, is surrounded by colorful medieval buildings and hosts a bustling market every Wednesday.
16. Brugge has an extensive network of underground canals, which were originally built for transporting goods and draining the city.
17. The city has been the setting for various films, most notably the 2008 dark comedy "In Brugge," which showcases many of its iconic landmarks.





Brugge Historical Trail

Start Point - Brugge Train Station

51.19735, 3.21830

Brugge railway station opened on 12 August 1838 when the Gent to Brugge railway was opened. The line was closer to the city center than it is today, passing through the large square 't Zand within the medieval walls. Work started on the present-day railway alignment outside the city walls in 1910, but it was abandoned during the First World War and not completed until 1936. The current station building, designed in the International Style, was opened in 1938.

Checkpoint #2 - Gunpowder Tower (Poertoren) & Minnewater

51.19861, 3.22359

The Poertoren is a tower on the Begijnenvest in Brugge. The tower has been the storage place for the city's gunpowder since 1477. The 18-meter-high tower has a diameter of 8 meters; the walls are approximately 1.3 meter thick.

The Minnewater (Lake of Love) itself is not a natural lake but originated in the 13th century as a kind of reservoir and buffer basin. All that water from the River Reie entered Brugge via the Minnewater. A current lockhouse was built to keep the water supply under control. A striking building on the eastern bank of the Minnewater is the castle della Faille. This neo-Gothic castle was built in 1893. People once believed that water spirits lived here, which is how this city lake got its name. Add to that a tragic love legend, mysterious trees and an abundance of greenery and you get a place that is all about romance.

Checkpoint #3 - Béguinage (Begijnhof)

51.20148, 3.22267

The beguinage was founded around 1244 by Margaret of Constantinople. The complex includes a Gothic beguinage church and about thirty white painted houses dating from the late 16th, 17th and 18th centuries. The main entrance with gate can be reached via the three-arched stone bridge, the Wijngaard Bridge. The first beguine house next to the entrance is furnished as a museum and the exhibition includes paintings, 17th- and 18th-century furniture and lacework, among others.





Brugge Historical Trail

Checkpoint #4 - Zeus, Leda, Prometheus and Pegasus statue,
Walplien 51.20269, 3.22434

The sculpture is located on Walplein Square, was created in 1982 by the Belgian sculptor Jef Claerhout and shows a carriage pulled by the winged horse Pegasus. On the chariot, which is in a wild ride, three figures can be seen, which represent Zeus in the form of a swan, Leda and Prometheus tied to the coach box with an ankle cuff and chain

Checkpoint #5 - Stoofstraat
51.20324, 3.22424

In the 14th and 15th centuries, the atmosphere in Stoofstraat was steamy, to say the least. Here there stood a bathhouse where well-heeled gentlemen and traders came to bathe. The baths provided relaxation and spicy pleasure to the well-to-do Brugge residents and the international population in Brugge. Because of its bad reputation the bathhouse disappeared from the scene in the mid-16th century.

Checkpoint #6 - The Church of Our Lady *
51.20430, 3.22418

The Church of Our Lady (Flemish: Onze-Lieve-Vrouwekerk) is a Roman Catholic church dating mainly from the 13th, 14th and 15th centuries. Its 115.6-metre-high (379 ft) tower remains the tallest structure in the city and the third tallest brickwork tower in the world. The church demonstrates the Gothic style in the prominent flying buttresses on the exterior which were constructed in the 1270s and 80s. The nave contains cross-vaults and black and white tiled flooring. The interior demonstrates the heavily ornamented Baroque style in the side aisles and chancel. The altarpiece of the large chapel in the southern aisle, known as the Cappella sacra, created in the 18th century, enshrines the most celebrated art treasure of the church—a white marble sculpture of the Madonna and Child created by Michelangelo around 1504.





Brugge Historical Trail

Checkpoint #7 - Bonifaciusbrug & Smallest Gothic Window

51.20493, 3.22534

The Sint-Bonifaciusbrug, was built above the River Reie in 1911, which provided a connection to the other part of the Arentshof, with Guido Gezelleplein. When you **cross the Bridge heading West, look up to your left, where you'll see a teeny tiny stained-glass window set in the wall of the Gruuthusemuseum. It's been called the smallest window in Brugge.**

Checkpoint #8 - Arentshof

51.20525, 3.22564

Arentshof is a small garden which has two columns, originating from the former **Waterhalle on the Markt. The Waterhalle was Europe's largest covered harbor Built** over the Reie River near Grote Markt at the end of the 13th century. Behind them is a work of art by Rik Poot: the Four Horsemen of the Apocalypse. There is also a 'gloriette' or gazebo, originating in the eighteenth century. In another part of the garden there is a bust of the Spanish-Brugge philosopher Juan Luis Vivès (1493 – 1540).

Checkpoint #9 - Rozenhoedkaai

51.20742, 3.22780

For centuries, this street along the canal bore the name Zoutdijk. In 1390, it was **mentioned that the salt alley was called "bi den Eechoutte." This where there a jetty was located where the ships that delivered salt were unloaded.** It was not until the 18th century that the name Rozenhoedkaai came into use. The reason was that stalls were set up there that sold rosaries. The Rozenhoedkaai runs from the Dijver to the Braambergstraat. Once upon a time, rosaries were sold here; today it **provides one of the city's loveliest views.**





Brugge Historical Trail

Checkpoint #10 – Huidenvettersplein (Tanners Square)

51.20772, 3.22772

At the beginning of the 14th century, Huidenvettersplein was given to the tanners or leather workers, as a work area, meeting place and seat of their trade, so that in 1302 it was already known as Huidevettersdam. In the 15th century, the leather processing came to an end, because of the bad smell, but the square retained the seat of the craft and its name. In the middle of the square is a column with two small lions on it. According to historian Adolf Duclos, there used to be a scale on the column on which the skins were weighed.

Checkpoint #11 - City Hall (Stadhuis) *

51.20838, 3.22711

Brugge, for over 600 year, has been governed from one of the oldest city halls in Belgium. The monumental facade of this building immediately reveals its importance. The first stone was laid in 1376, but the construction itself lasted until 1421. The building inspired master builders of the city halls in Brussels, Ghent, Leuven and Oudenaarde and had a great influence on the Gothic civil architecture in the city.

Checkpoint #12 - Basilica of the Holy Blood & Romanesque St Basil chapel

51.20818, 3.22660

The Basilica of the Holy Blood in Brugge is a significant religious site consisting of two distinct chapels. The upper chapel, transformed into a Gothic structure in the 15th century, houses the revered Relic of the Holy Blood, said to have been brought from the Holy Land. Its interior features intricate stained-glass windows, gilded murals, and an elaborate silver tabernacle where the relic is displayed. The chapel's vaulted ceiling and decorative elements reflect its medieval **modifications. The lower chapel, known as St. Basil's Chapel, was built in the 12th century and retains its original Romanesque architecture. Characterized by thick stone walls, rounded arches, and subdued lighting, it contrasts with the ornate upper chapel. Dedicated to St. Basil the Great, it remains largely unaltered, preserving its medieval simplicity.**





Brugge Historical Trail

Checkpoint #13 - Sint Annakerk

(Cub Scout Optional) 51.21196, 3.23187

The Sint-Annakerk is a Catholic church in the district and parish of Sint-Anna in Brugge. In 1496, the mansion "Hof ter Vere" was purchased and converted into a single-nave auxiliary church, which was consecrated in 1497. At the end of the 17th century, it was converted from a late Gothic to a Baroque building.

Checkpoint #14 - Jeruzalem Kerk

(cub scout Optional) 51.21239, 3.23375

The Jerusalem Church or Jerusalem Chapel in Brugge was built in the first half of the 15th century and is one of the few private churches in Belgium. This 15th century church was built by the Adornes family, inspired, it is said, by the floor plan of the Church of the Holy Sepulchre in Jerusalem. The cross of Jerusalem can still be seen on the tower of the Jerusalem Church. The interior is characterized by unique stained-glass windows and the mausoleum of Anselmus Adornes and his wife, Margareta van der Banck.

Checkpoint #15 - Lace Museum (Kantcentrum) *

(Cub Scout Optional) 51.21329, 3.23371

Lace was born in the 16th century. In Brugge there were various large lace **schools. The Kantcentrum originated in the Apostoline Sisters' lace school. The** teaching of lacemaking started out as a means of giving poor households the means of earning a living, over the centuries it evolved into preserving a unique pastime





Brugge Historical Trail

Checkpoint #16 - Folks Museum (Volkskundemuseum) *

(Cub Scout optional) 51.21368, 3.23338

The ordinary daily life in Brugge in the 19th and early 20th centuries can be found in the Volkskundemuseum (Folk Museum). You enter an old classroom, an old **pharmacy, a tailor's workshop, a confectionery store, or grocery store. Time seems to have stood still in these restored laborer's dwellings. All the rooms have a treasury of old items: hats, shoes, pilgrimage pennants, old children's games, cake and chocolate molds.**

Checkpoint #17 - Guild of Saint George *

(cub scout Optional) 51.21381, 3.23704

The St George's Crossbow Guild is 700 years old, making it one of the oldest archery guilds in the country. Shooting guilds were originally founded as brotherhoods or associations of able-bodied men who had to defend the city, freedom or municipality. Now that their military role had long been played out., their only goal is to practice crossbow shooting

Checkpoint #18 - Kruispoort

(cub scout Optional) 51.21259, 3.24010

The Kruispoort is one of the remaining city gates and is a witness to medieval military architecture. The first gate (1297-1304) on this site was part of the second Brugge city wall from 1297. The original complex consisted of a main building (two heavy round towers with defensive walls, a vestibule and a high superstructure), with a front gate, eight towers and two bridges. In 1760 the front gate was demolished and never rebuilt.





Brugge Historical Trail

Checkpoint #19 - Sint-Janshuismolen

(cub scout Optional) 51.21558, 3.23816

The Sint-Janshuismolen is the only one of four windmills on the city walls where grain is still ground. If the wind is favorable, one can even see the mechanism in action. Windmills appeared on the walls from the 13th century onwards when the outer city walls were built. The Sint-Janshuismolen dates from 1770 and still stands in its original location.

Checkpoint #20 - St Sebastian's Guild *

(cub scout Optional) 51.21554, 3.23634

The Guild of Saint Sebastian is an archers' guild that has been in existence for more than 600 years. The longbow guild protected the city in the 14th century. The members of this guild are exclusively male, with two notable exceptions: Queen Mathilde of Belgium and the late Queen of England.

Checkpoint #21 - English Convent

(cub scout Optional) 51.21476, 3.23434

The English Convent in Brugge, founded in 1629, is a serene sanctuary tucked away **within the city's medieval streets. Enclosed by high brick walls, this historic** convent has housed English Benedictine nuns for centuries, preserving a legacy of faith and quiet devotion. Its architecture reflects a mix of Flemish and classical influences, with arched windows and a peaceful garden at its heart. Inside, the **chapel's ornate altar and wooden choir stalls evoke a sense of timeless reverence.** **Though secluded, the convent remains a testament to Brugge's deep religious heritage, offering a glimpse into its centuries-old monastic traditions.**





Brugge Historical Trail

Checkpoint #22 - Jan Van Eyck Square

51.211629, 3.226021

Jan Van Eyck Square, located in the historic center of Brugge, reflects the city's commercial and artistic past. Named after the renowned Flemish painter, it was once a vital hub for merchants due to its proximity to the old harbor. The square is surrounded by well-preserved medieval and neoclassical buildings, including the **Tollhouse and the Burgher's Lodge. At its center stands a bronze statue of Jan Van Eyck**, honoring his contributions to art. The adjacent Spiegelrei canal enhances the **square's historic character, linking it to Brugge's trade routes. The area remains a testament to the city's economic and cultural heritage.**

Checkpoint #23 - Customs House / Poortersloge (Burghers' Lodge)

51.21141, 3.22541

The Poortersloge was built between 1395 and 1417 by order of the then commercial elite, the Brugge citizens. This district was the hub of international trade at the time. Ships were loaded and unloaded there. Trading nations built their nation houses in the immediate vicinity, where international representatives stayed and goods were stored. At the end of the 19th century, the building was given its current appearance, and the Poortersloge, together with several adjacent houses, was restored and furnished as the State Archives from 1912.

Checkpoint #24 - Opera House (Koninklijke Stadsschouwburg)

51.210649, 3.224134

The Koninklijke Stadsschouwburg, Brugge's grand opera house, is a masterpiece of 19th-century architecture, exuding elegance and cultural prestige. Built in 1869, this opulent theater boasts a richly decorated interior, with gilded balconies, plush red velvet seats, and an intricately painted ceiling that captures the grandeur of classical European opera houses. Its majestic façade, adorned with neoclassical **elements, stands as a symbol of the city's artistic heritage. Hosting opera, ballet,** and theatrical performances, the Stadsschouwburg remains a vibrant cultural hub. Stepping inside, visitors are transported to a bygone era of artistic refinement, where music and drama come to life.





Brugge Historical Trail

Checkpoint #25 - Market Square

51.20892, 3.22424

The Market Square of Brugge, or Grote Markt, is the historic and commercial center of the city. Surrounded by medieval and 19th-century buildings, it features prominent landmarks such as the 13th-century Belfry and the Provincial Court. The square is paved with cobblestones and lined with stepped-gable guild houses, showcasing Flemish architectural styles. A statue of Jan Breydel and Pieter de Coninck stands at its center, commemorating local resistance leaders. The Markt hosts weekly markets and public events, maintaining its role as a bustling **gathering place. Its layout and structures reflect Brugge's medieval trade significance and civic development.**

Checkpoint #26 - Belfry of Brugge *

51.20816, 3.22486

The Belfry of Brugge, a medieval tower standing 83 meters tall, dominates the city's skyline. Constructed in the 13th century, it served as a watchtower, treasury, and administrative center. The tower features a robust stone base, an octagonal upper section, and a pointed spire. Inside, a narrow staircase of 366 steps leads to a viewing platform overlooking the city. The carillon, consisting of 47 bells, produces melodies that have resonated over Brugge for centuries. Positioned in the Markt **square, the Belfry remains an enduring symbol of the city's commercial and civic heritage, reflecting its medieval prominence and architectural craftsmanship.**

Checkpoint #27 - Simon Stevinplein

51.20661, 3.22274

The mathematician and physicist Simon Stevin; born in Brugge in 1548, after whom the square is named, stands proud on this lively square, which is framed by neat rows of linden trees. He invented the decimal system for fractions and created the mathematical basis for the construction of fortifications. Until 1819 the square was **the site of the Westvleeshuis or the Bruges Groot Vleeshuis (Great Butchers' Hall).** It was owned by the Guild of Butchers and, before being turned into a square, it was called the Oude Vrijdagmarkt (Old Friday Market).





Brugge Historical Trail

Checkpoint #28 - Sint-Salvatorskathedraal (Saint Saviour's Cathedral)

51.20557, 3.22148

St. Salvator's Cathedral, Brugge's oldest parish church (12th–15th century) has amongst its treasures a red loft with an organ, medieval tombs, Brussels tapestries and a rich collection of Flemish paintings (14th-18th century). Also known as the Cathedral of the Saviour and St. Donat, it is the Roman Catholic cathedral of Brugge. St. Salvator, the main church of the city, is one of the few buildings in Brugge that have survived the onslaught of the ages without damage. This church was not originally built to be a cathedral; it was granted this status in the 19th century.

Checkpoint #29 - Sint-Janshospitaal

51.20421, 3.22366

The Hospital of St. John (Oud Sint-Janshospitaal) was a medieval hospital in Bruges. It was founded in the mid-12th century. The premises contain some of Europe's oldest surviving hospital buildings. The hospital grew during the Middle Ages and was a place where sick pilgrims and travellers were cared for. The site was later expanded with the building of a monastery and convent. Today part of the hospital complex holds the popular Hans Memling museum, where a number of works, such as triptychs (works of art) are displayed, as well as hospital records, medical instruments and other works of art.

Checkpoint #30 - The Zand

51.20427, 3.21812

The Zand, Brugge's largest square, is a lively hub blending history, culture, and modern vibrancy. Once the site of the city's medieval harbor, it now serves as a spacious gathering place, lined with cafés, shops, and striking architecture. The square is a focal point for events, from bustling markets to open-air concerts. With the grand Concertgebouw nearby, the Zand seamlessly merges Brugge's past with contemporary life, offering both locals and visitors a dynamic urban experience.





Brugge Historical Trail

Checkpoint #31 - Monument of King Albert I

51.20102, 3.21902

The monument of Albert I of Belgium was created by Octaaf Rotsaert in 1954 to commemorate the king who led his country during the First World War. When the First World War broke out in 1914, Albert refused to allow the Germany army to pass through Belgium to attack France. He took personal command of the Belgian army and fought bravely against the invaders. In the fall of 1918, Albert led the final offensive that liberated occupied Belgium.

Endpoint - Brugge Train Station

51.19735, 3.21830





Museums

Historium (51.20931, 3.22503) *

Experience in various ways how lively Brugge was during the Golden Age. Follow a day in the life of a medieval apprentice at the Brugge Historium, an interactive museum designed to transport you back to 15th-century Belgium. History comes alive through multimedia and special effects as you walk through seven different themed rooms with an audio guide.

Folklore Museum (Volkskundemuseum) * (51.21368, 3.23338)

The Folklore Museum (Volkskundemuseum) in Bruges is located in a series of restored 17th-century almshouses. It presents a detailed reconstruction of daily life in 19th- and early 20th-century Flanders through a collection of period rooms, workshops, and commercial spaces, including a classroom, pharmacy, and **cobbler's shop. Exhibits display traditional tools, household objects, and local crafts.** The museum also features a functioning tavern and hosts demonstrations of historical trades and customs.

Chocolate Museum * (51.21087, 3.22624)

The chocolate museum is located in a 15th-century former wine tavern, the Huis De Croone, and shows how cocoa is processed into chocolate with objects, demonstrations and taste tests. The many exhibits provide an image of the history of chocolate.

Friet Museum * (51.21104, 3.22401)

The Frietmuseum is located in the Gothic Saaihalle (former wool hall) and is one of the oldest buildings in the World Heritage listed historic center of Brugge and dates back to 1399. Exhibits on the ground floor trace the history of potatoes, beginning in Peru c.8000BC. The first floor details the history of fries, and their origins in Belgium. Exhibits include photographs, artwork, historical potato peelers and chip-making machines, and a video outlining how to make perfect fries.





Museums (cont)

Groeninge Museum * (51.20533, 3.22666)

The Groeningemuseum is a municipal museum is built on the site of the medieval Eekhout Abbey. It houses a collection of Flemish and Belgian paintings covering six centuries, from Jan van Eyck to Marcel Broodthaers. The museum's highlights include Early Netherlandish paintings, works by Renaissance and Baroque masters, as well as a selection of paintings from the 18th and 19th century neo-classical and realist periods, milestones of Belgian symbolism and modernism, masterpieces of Flemish Expressionism and many items from the city's collection of post-war modern art.

Diamond Museum * (51.20285, 3.22596)

The Brugge Diamond Museum, located on Ankerplein, shows the history of Brugge as the oldest diamond center in Europe. Lodewijk van Berken, a native of Brugge, succeeded in cutting the facets on a diamond very precisely and symmetrically, which is why he was the first to invent the pear-shaped "pear-cut" ("pendeloque" or "briolette") diamond around 1476, allowing the brilliance of the diamonds to really stand out. The visitor receives information about the world of diamonds, one of Belgium's most important export products.

Gruuthusemuseum * (51.20521, 3.22498)

The Gruuthusemuseum is a museum of applied arts located in the medieval Gruuthuse. The museum displays both the interior of a house of a rich family as it would have been in the late Middle Ages and a collection of everyday tools and utensils. On display are furniture, bobbin lace, objects in gold and silver, weapons, musical instruments, and ceramics. A highlight of the museum is the collection of Flemish tapestries from the 16th and 17th century



Museums (cont.)

Stadhuis * (51.20838, 3.22711)

The **Stadhuis Museum of Brugge**, housed in the city's Gothic town hall, is one of the oldest in the Low Countries, dating back to 1376. The building's façade features pointed arches, statues of historical figures, and intricate tracery. Inside, the museum showcases Brugge's administrative history through artifacts, documents, and artworks. The grand Gothic Hall, adorned with a vaulted ceiling and 19th-century murals, illustrates key moments in the city's past. Ornate wooden paneling and stained-glass windows highlight the craftsmanship of the period. The museum provides historical context to Brugge's governance, reflecting its medieval significance and architectural heritage.

Janshospitaal and Memling Museum * (51.20421, 3.22366)

The Sint-**Janshospitaal in Brugge**, one of Europe's oldest surviving hospitals, dates back to the 12th century. Its medieval halls, once used for patient care by monks and nuns, now house the Memling Museum. The museum features religious artworks, medical artifacts, and historical documents. Among its most significant pieces are six masterpieces by Hans Memling, including the Shrine of St. Ursula. **The building's Gothic architecture, wooden beams, and arched windows reflect its medieval origins. The collection provides insight into Brugge's medical history and artistic heritage, showcasing the intersection of healthcare, religious devotion, and Flemish Renaissance art.**

Basilica Museum * (51.20818, 3.22660)

The Basilica Museum of Brugge, located within the Basilica of the Holy Blood, houses religious artifacts and historical relics. The museum preserves the revered **phial said to contain a relic of Christ's blood, brought from the Holy Land in the 12th century.** The exhibition includes medieval manuscripts, liturgical objects, and ecclesiastical vestments. The architecture blends Romanesque and Gothic styles, **reflecting the basilica's evolution over centuries.** Stained-glass windows and ornate woodwork enhance the historical atmosphere. The museum provides insight into **Brugge's religious heritage, documenting its deep-rooted devotion and the significance of the Holy Blood relic in local traditions and ceremonies.**



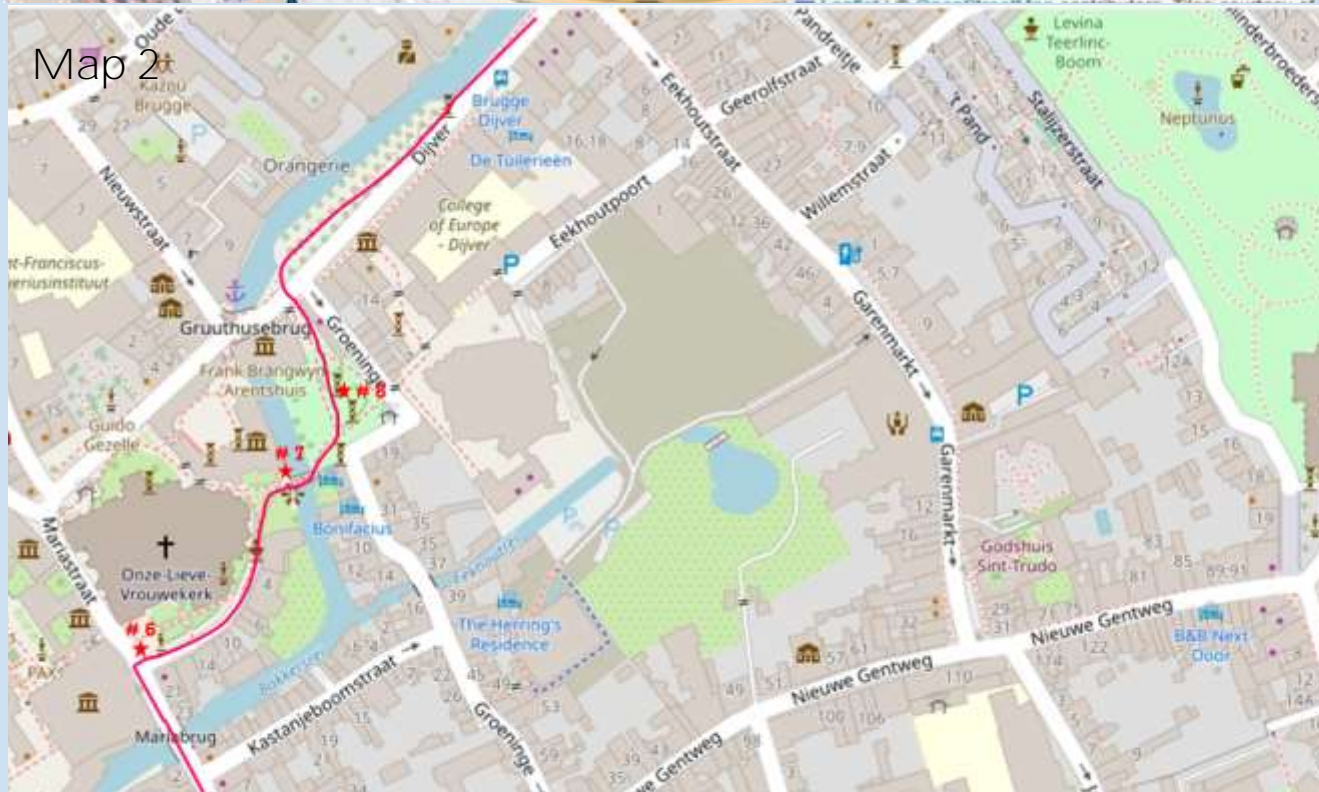


Maps

Map 1

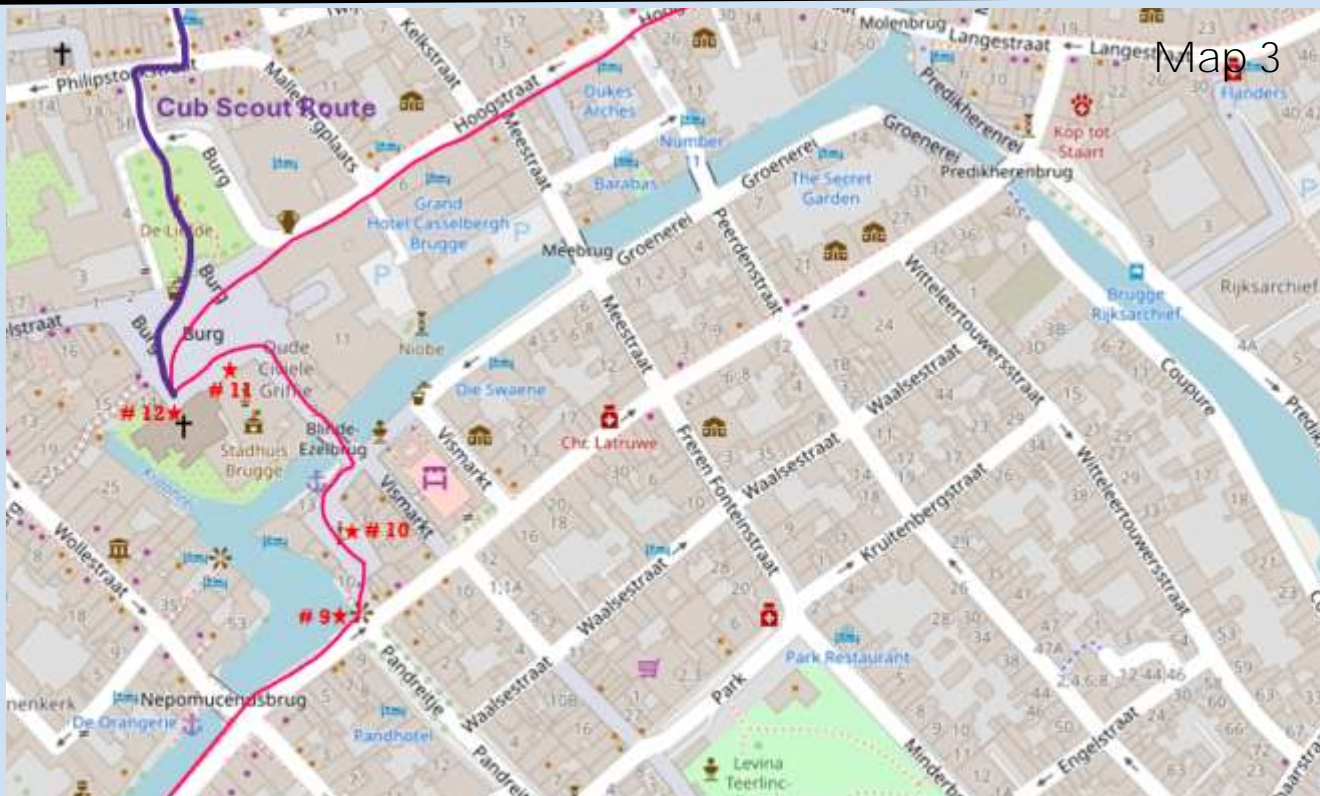


Map 2





Maps



Map 3

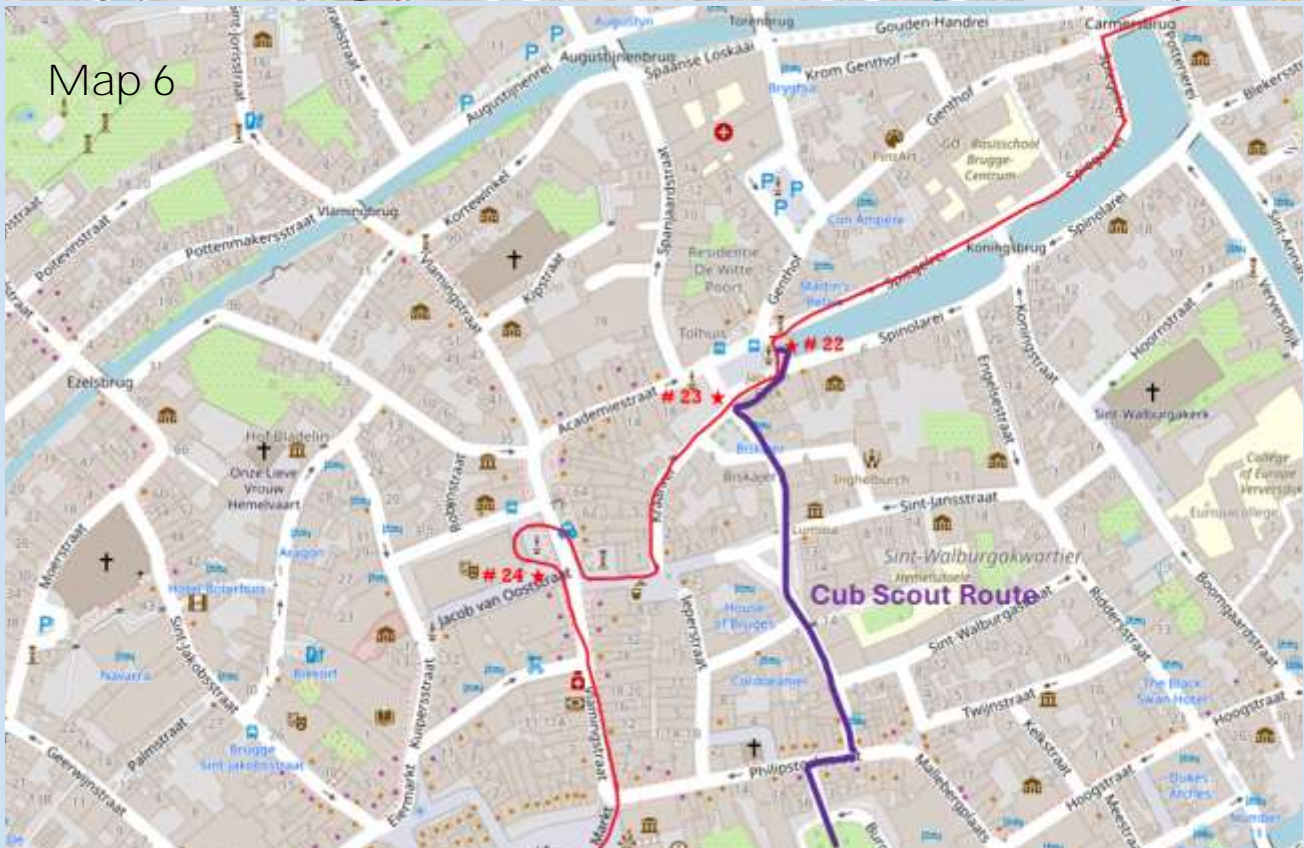


Map 4





Maps





Maps





Maps





Pictures



1. Train Station



2.1 Poertoren



2.2 Minnewater



3. Béguinage



4.1 Zeus, Leda, Prometheus and



5. Stofstraat



6. The Church of
Our Lady



7.1 Bonifacius brug



7.2 Smallest Window



8. Arentshof



9. Rozenhoedkaai





Pictures



10. Huidenvettersplein



11. City Hall



12.1 Basilica of the Holy



12.2 Romanesque St Basil



13. Sint-Annakerk



14. Jeruzalem Kerk



15. Kantcentrum



16. Folks Museum



17. Guild of Saint George





Pictures



18. Kruisport



19. Sint-Janshuismolen



20. St Sebastian's Guild



21. English Covent



22. Jan Van Eyck Square



23. Customs House /
Poortersloge





Pictures



24. Opera House (Koninklijke Stadsschouwburg)



25 & 26. Market Square and Belfry



27.



28.



29.



30.



31. Monument of King Albert I





Speaking Flemish

Hello

Hallo

Good Morning

Goeiemorgen

Good Day

Goeiedag

Thank you

Dank u

Please

Alstublieft

Do you speak English?

Spreekt u Engels

I would like.....?

Ik zou graag _____

..... **the bill**

..... **de rekening**

..... **a room**

..... **een kamer**

I would like to purchase that

Ik zou dat graag kopen

How much is that?

Hoeveel kost dat?

Can I pay with a credit card?

Kan ik met een creditcard betalen?

Where is?

Waar is

..... **an ATM?**

..... **een pinautomaat**

..... **the toilet?**

..... **het toilet?**

..... **the fitting room**

..... **de paskamer**

..... **a pharmacy**

..... **een apotheek**

..... **the Post Office**

..... **het postkantoor**

I need help

Ik heb hulp nodig

I need a doctor

ik heb een dokter nodig





Historical Trail Quiz

1. What is another name for Brugge?
2. Why was Brugge important during the Middle Ages?
3. What is another name for the Minnewater?
4. What is the name of the famous sculpture inside the Church of Our Lady and who carved it?
5. What are the names of the four horsemen
6. What are the two types of Architecture is the church Basilica of the Holy Blood
7. Who brought back the Holy Blood from the Holy Land on his return from the Second Crusade
8. What was Jan Van Eyck's profession?
9. What the name of the man in front of the Opera House
10. What are the names of the two individuals in the markt
11. How many steps are there in the Belfort
12. What was the profession of Simon Stevin?





Advancement

Cub Scout Adventures

- Mountain Lion: Requirements - 1, 2, 3, 4
- Tigers in the Wild: Requirements: 1, 2, 3
- Wolf: Paws on the Path: Requirements: 1, 2, 3, 4, 5
- Bear Habitat: Requirements 1, 2, 3, 4, 5, 6, 7, 8, 9
- Webelos Walkabout: Requirements: 1, 2, 3, 4, 5, 6, 7

Scout Advancement

- Tenderfoot: Req 4d, 5a, 5b, 5c
- Second Class: Req 3a, 3b, 3c, 3d, 6c
- First Class: Req 4a, 4b

Merit Badges

- American Heritage: Requirement 4(e)
- Architecture: Requirement 1(a), 2(c)
- Art: Requirements: Requirement 6
- Citizenship in the Nation: Requirement 7(a)
- Hiking: Requirements 1(a), 1(b), 2(a), 2(b), 2(c)
- Sculpture: Requirement 2(c)
- Textile: Requirement 3(a)





Answers to Historical Trail Quiz

1. Venice of the North
2. Brugge was once a major nexus of trade in medieval Europe, and of art and architecture during the Renaissance.
3. Lake of Love
4. Madonna of Brugge is a marble sculpture by Michelangelo
5. Pestilence, War, Famine, and Death
6. Gothic & Romanesque
7. Dietrich of Alsace in 1149
8. Early Northern Renaissance Painter
9. Papageno
10. Jan Breydel and Pieter de Coninck
11. 366 steps
12. Mathematician



